

System Protect Software User Manual

Table of Contents

1	Introduction	4
1.1	Supported platform.....	4
1.2	Quickly setup for SPS on Windows.....	5
1.3	Quickly setup for SPS on Linux (Mac OS) with GUI	5
1.4	Quickly setup for SPS on Linux (Unix) with CUI.....	6
2	Installation and configuration for SPS in the Windows.....	7
2.1	Installing the SPS	7
2.2	Starting the SPS	7
2.3	Configuring the SPS.....	8
2.4	Uninstall the SPS	13
2.4	Configuring the Port.....	14
3	Installation and configuration in Linux, MAC OS and Unix.....	15
3.1	Installing the SPS	15
3.2	Starting the SPS	16
3.2.1	Linux (MAC OS) with GUI.....	16
3.2.2	Linux (Unix) with CUI.....	17
3.3	Configuring the SPS.....	17
3.3.1	Linux (MAC OS) with GUI.....	17
3.3.2	Linux (Unix) with CUI.....	18
3.4	Uninstall the SPS	22
3.5	Configuring the Port.....	23
4	Installation and configuration for SPS in the Hyper-V Server.....	24
4.1	Hyper-V configuration	24
4.2	Installing and configuring the SPS	25
4.3	Uninstall the SPS	27
5	Installation and configuration for SPS in the Citrix XenServer	28
5.1	Citrix XenServer Configuration.....	28
5.1.1	Installing XenServer tools for each Virtual Machine	28
5.1.2	Open XenServer host ports	30
5.2	Installing and Configuring for SPS	30
5.2.1	Installing SPS	30
5.2.2	Configuring SPS	30
6	Shutdown Operation.....	32
6.1	Shutdown flow chart.....	32
6.2	Shutdown setting (NMC Webpage Side)	32
6.2.1	Shutdown actions setting.....	32
6.2.2	Warning Period and Warning Interval Setting.....	33
6.2.3	UPS Shutdown Delay Setting.....	33
6.2.4	Cancel UPS Shutdown if events restored in Shutdown Delay	35
6.3	Shutdown order	35
6.3.1	Shutdown continue if events restored	35
6.3.2	Shutdown discontinue if events restored	37

6.4 Redundant UPS Input shutdown	38
6.5 Simulate shutdown by event.....	39
6.6 Load segment shutdown.....	40
6.6.1 Load segment timer is shorter than AC fail warning period	41
6.6.2 Load segment timer is longer than AC fail warning period	42

1 Introduction

The SPS (System Protect Software) is one utility which communicates with NMC (Network Monitoring Card). SPS provides logs events, notify users of events and protect system to shutdown gracefully. With the SPS, it can save application's data and documents before system shut down as well.

SPS has two major components: "SPS Service" and "SPS Interface", SPS Service runs in the background as a system service; and SPS Interface is a user interface application that allows the user to tailor the configuration parameters.

1.1 Supported platform

Supported platforms (validated):

Windows
Windows XP Home Edition
Windows XP Professional
Windows 2000
Windows Server 2003 x32,x64
Windows Server 2008 x32,x64
Windows Server 2012 x64
Windows Server 2016 x64
Windows Server 2019 x64
Windows Server 2022 x64
Windows Vista x32, x64
Windows 7 x32, x64
Windows 8 x32, x64
Windows 10 x64
Windows 11 x64
Hyper-V Server 2008/2012/2019
LINUX
Red Hat Enterprise Server 5.x for i386,AMD64
Red Hat Enterprise Server 6.x for i386,AMD64
Red Hat Enterprise Server 7.x AMD64 (CUI)
Red Hat Enterprise Server 8.x AMD64 (CUI)
SUSE Enterprise Server 10.x for i386,AMD64
SUSE Enterprise Server 11.x for i386,AMD64
SUSE Enterprise Server 12.x for AMD64 (CUI)
Ubuntu 8.x for i386,AMD64
Ubuntu 9.x for i386,AMD64
Ubuntu 10.x for i386,AMD64

Ubuntu 11.x for i386,AMD64
Ubuntu 12.x for i386,AMD64
Ubuntu 13.x for i386,AMD64
Ubuntu 14.x for i386,AMD64
Ubuntu 16.04 x86_x64 (CUI)
Ubuntu 17.10 x86_x64 (CUI)
Ubuntu 20.04 x86_x64 (CUI)
Ubuntu 22.04 x86_x64 (CUI)
MAC OS
Mac OS 10.5 for PPC
MAC OS 10.6/10.7/10.8/10.9/10.10/10.11/10.12/11.3/12.x/13.3 for Intel
Citrix XenServer
Citrix XenServer 6.2
Citrix XenServer 6.5
Citrix XenServer 7.2
Unix
Solaris 10/11 for Intel
Solaris 10 for Sparc
FreeBSD 7.X, 8.X, 9.X
HP UX 11.31

1.2 Quickly setup for SPS on Windows

- Download and unzip the SPS installation package, Double click the “setup” program, install the SPS
- The SPS service will be started automatically when the system boots
- Double click the SPS icon in the taskbar, open the SPS interface, Input the NMC IP address to add the device
- Select the alarm events from Events list. The alarm events are selected as default:
Ac Fail, Battery Low, Schedule Shutdown, Battery Capacity below Limit, Battery Backup Time below Limit
- To check the setting, simulate the system shutdown by SPS according to section 8.5

1.3 Quickly setup for SPS on Linux (Mac OS) with GUI

- Download and unzip the SPS installation package, Enter the command to install the SPS: **./SPS.install**
- Go to the installation path “/opt/sps”, Enter the command to start the SPS manually: **./SPSService**
The SPS service will be started automatically when the system boots
- Enter the command to open the SPS interface in the Linux: **./SPS**

- Input the NMC IP address to add the device
- Enter the command to open the SPS interface in the MacOS: **open SPS.app**
Input the NMC IP address to add the device
- Select the alarm events from Events list. The alarm events are selected as default:
Ac Fail, Battery Low, Schedule Shutdown, Battery Capacity below Limit, Battery Backup Time below Limit
- To check the setting, simulate the system shutdown by SPS according to section 8.5

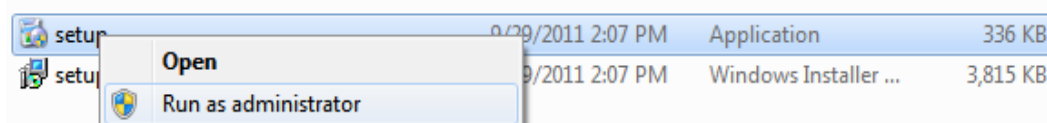
1.4 Quickly setup for SPS on Linux (Unix) with CUI

- Download and unzip the SPS installation package, Enter the command to install the SPS: **./SPS.install**
- Go to the installation path `"/opt/sps"`, Enter the command to start the SPS service: **./SPSService**
The SPS service will be restarted automatically when the system boots
- Enter the command: **./SPS -i**, input the password, the default password is "admin", edit the configuration, find the below line, Input the NMC IP address to add the device:
`<Remote name="NMC IP" serv="2993" model=""/>`
- The alarm events are selected as default:
Ac Fail, Battery Low, Schedule Shutdown, Battery Capacity below Limit, Battery Backup Time below Limit
- Restart the SPS Service by the command: **./SPS -r**
- To check the setting, simulate the system shutdown by SPS according to section 8.5

2 Installation and configuration for SPS in the Windows

2.1 Installing the SPS

- For Windows XP and server 2003 operating system, open the Windows folder, the installing process can be executed by double click the program icon ("setup.exe" or "setup.msi") directly.
- For Microsoft Windows Vista, server 2008, server 2012, Windows 7 and 8 operating systems, it recommends the installing process is executed with the administrator account, please right click the "setup.exe" and choose "Run as Administrator".



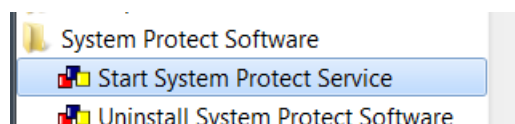
Note: The setup.msi is not available for Windows Vista operating system, server 2008, server 2012, Windows 7 and Windows 8 OS.

- For Windows 2000 operating system, open the Windows-2000 folder, the installing process can be executed by double click the program icon "setup.exe".
- Follow the instruction step by step to finish the installing process.
 - By default of 32 bit operating system, SPS installs to "C:\Program Files\System Protect Software".
 - By default of 64 bit operating system, SPS installs to "C:\Program Files (x86)\System Protect Software"

2.2 Starting the SPS

SPS service starts automatically when operating system boots as default.

- There are two methods to start the SPS manually:
 - Select Start menu > "All Programs" > "System Protect Software" to start the Tray Icon and SPS service.



- Select Start menu > Control Panel > Administrative tools > Services, and find the service "System Protect Service". Right click it and select "Start" to start the SPS service.

stlssvr			Manual	Local System
System Event Notification	Tracks syst...	Started	Automatic	Local System
System Protect Service		Started	Automatic	Local System

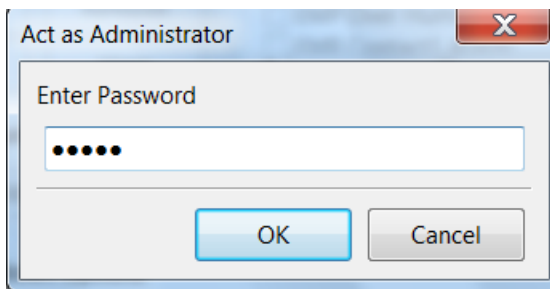
- SPS Icon appears in status area of the task bar after the SPS service start. Double click the

Icon will start up the SPS interface screen.

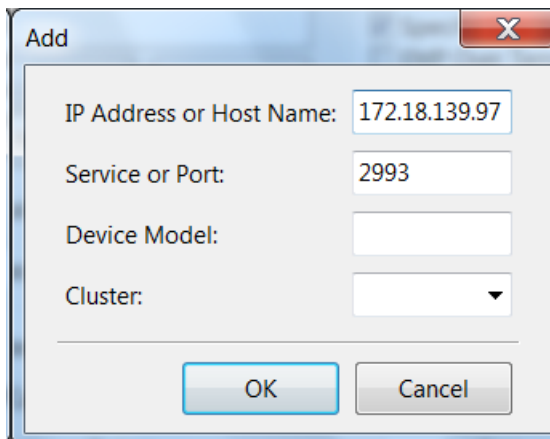


2.3 Configuring the SPS

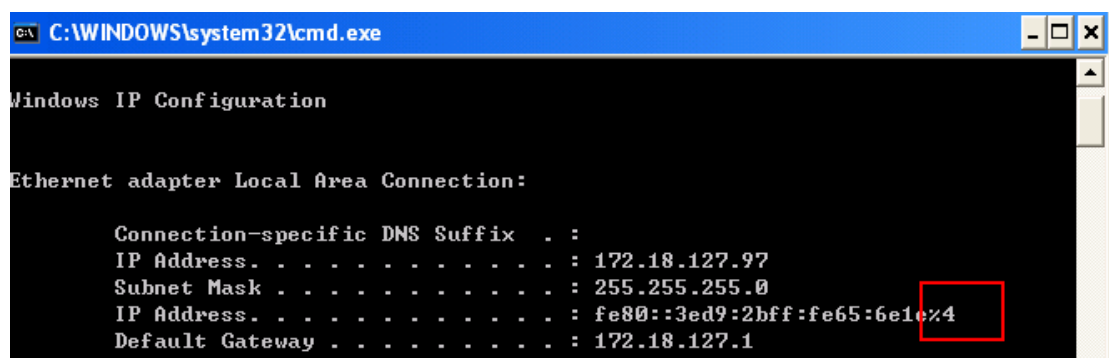
- SPS offers authority system. Only the administrator of SPS has full privilege to configure SPS. General Users have privilege for reading SPS only. The administrator of SPS is able to login by click "System" > "Act as Administrator" and then enter the password. By default, the password is "admin".

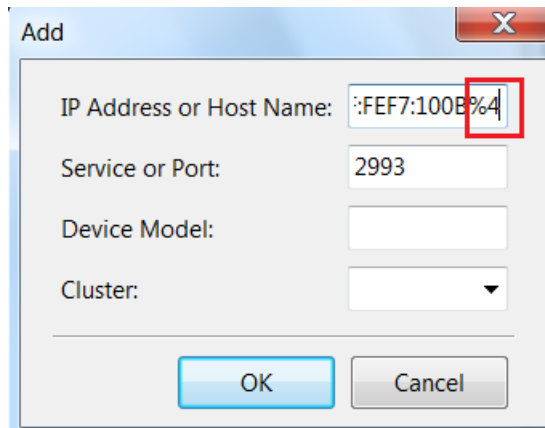


- Enter the IP address of NMC via click "Add" button on SPS interface.

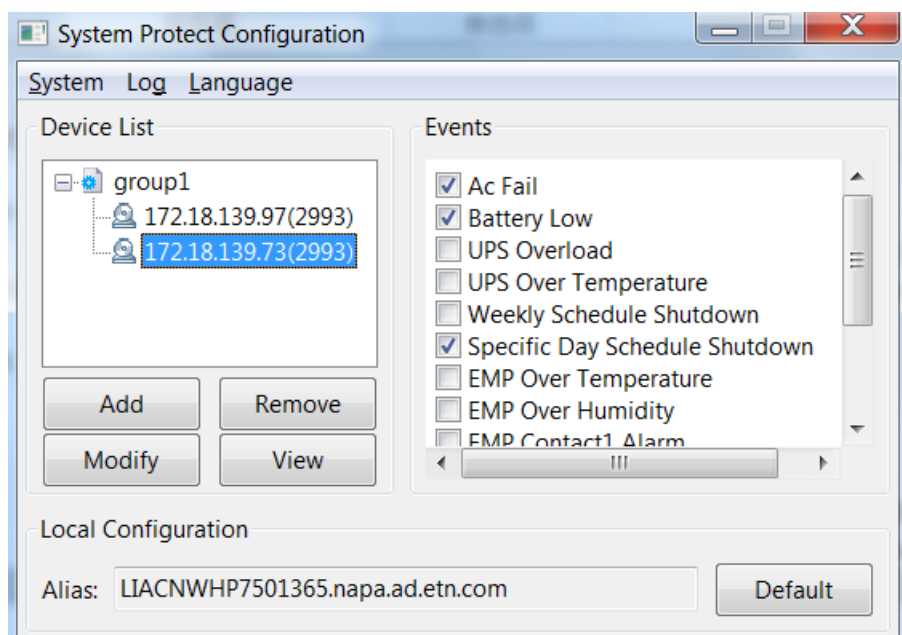
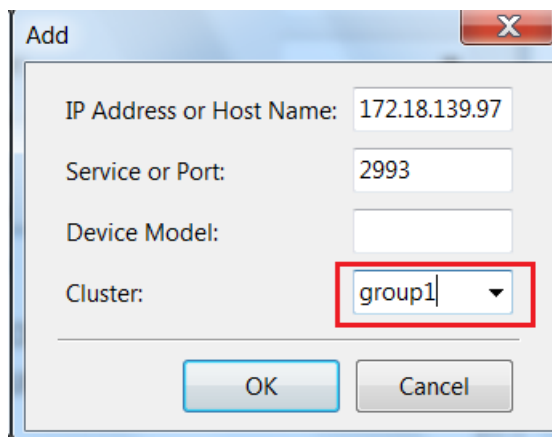


Note: If the IP address is IPV6, Please add the network id as suffix at the end of IP address (for example: %4) as the below image.

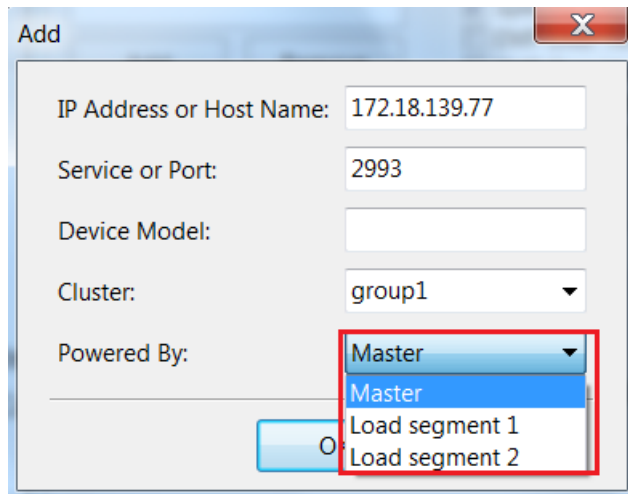




- Enter the Cluster name if the computer is protected by the redundant UPS Input. The NMC UPSs that under the same Cluster will become a group. For more information, please refer to section 8.4



- SPS supply three way for Power: Master, Load segment 1, Load segment 2
Note: The SPS version should be 1.5.0.2 and later



IP Address or Host Name: 172.18.139.77

Service or Port: 2993

Device Model:

Cluster: group1

Powered By: Master

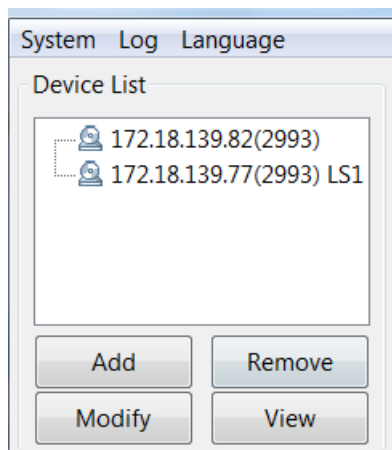
Load segment 1

Load segment 2

If the UPS support Load segment, you can choose LS1 or LS2. The device use LS1 as default.

If the UPS don't support Load segment, you can use Master.

For example: 172.18.139.82 use master power and 172.18.139.77 use LS1 power.



System Log Language

Device List

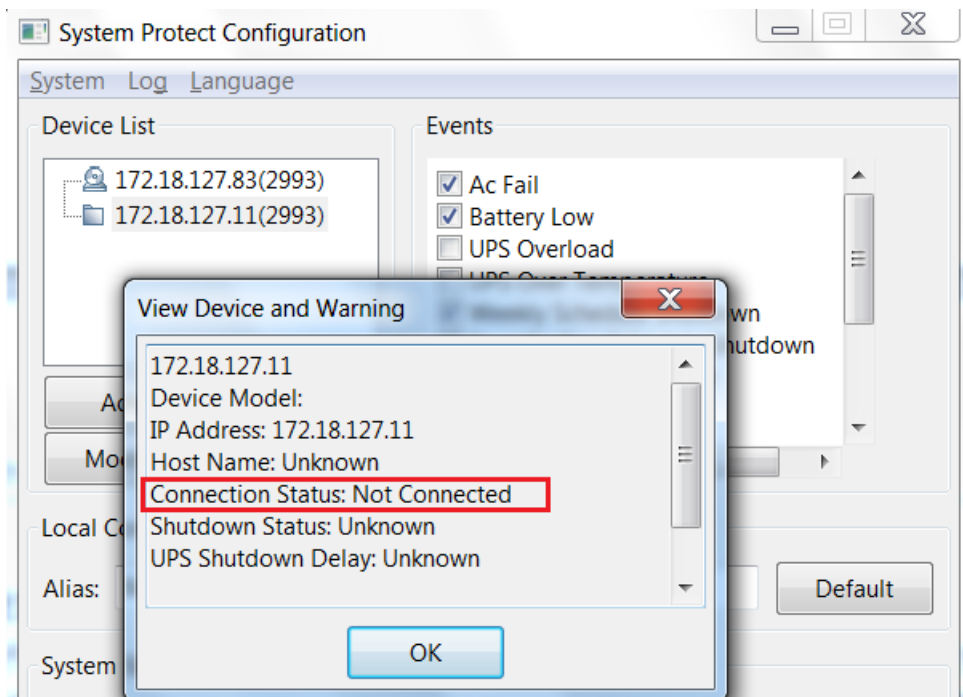
172.18.139.82(2993)

172.18.139.77(2993) LS1

Add Remove

Modify View

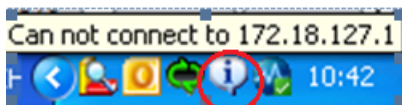
- The device icon in the "Device List" will be abnormal if enter the error IP address. Click the View button, the Connection Status shows "Not Connected"



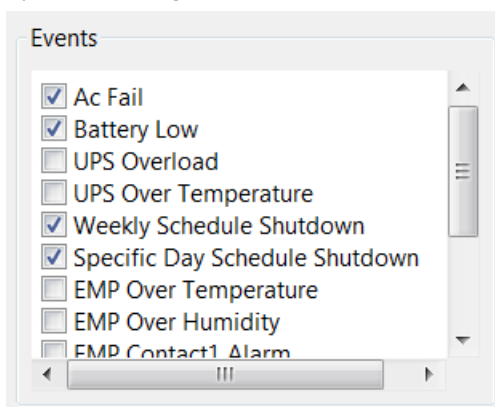
Note: The connection will fail if the UPS output is off.

Synchronously, the Tray Icon in the task widows will be signed with warning.

Move the mouse to the Tray Icon, The detailed information will be prompted.



- Select the alarms checkbox in the Event list: When the events occur, the SPS will pop up alarm dialog or shut down the computer gracefully.
Unselect the alarms checkbox in the Event list: When the events occur, the SPS will not pop up alarm dialog and will not shut down the computer.



Supported Alarms:

Alarm	Default Setting
Ac Fail	checked
Battery Low	checked
UPS Overload	unchecked
UPS Over Temperature	unchecked

System Protect Software User Manual

Weekly Schedule Shutdown	checked
Specific Day Schedule Shutdown	checked
EMP Over Temperature	unchecked
EMP Over Humidity	unchecked
EMP Contact1 Alarm	unchecked
EMP Contact2 Alarm	unchecked
Battery Capacity Below Limit	checked (The SPS version should be 1.3.0.3 or later)
Battery Backup Time Below Limit	checked (The SPS version should be 1.3.0.3 or later)

- In the Action option, select Event Warning, Shutdown, or Sleep button.
By the default, "Shutdown" is selected

Action	Definition
Event Warning	When the events occur, The SPS will pop up the alarm dialog, but the system will not be shut down or sleep.
Shutdown	When the shutdown condition is met, the system will be shut down
Sleep	When the shutdown condition is met, the system will be sleep

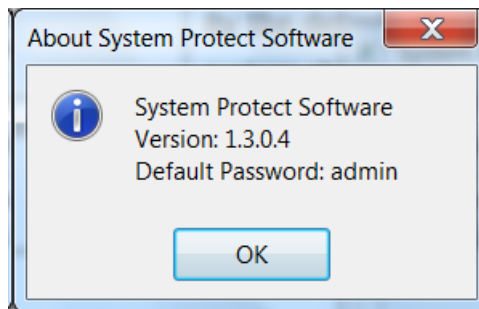
- In the System shutdown options, set the shutdown parameters.

The parameters are defined as following: (For more information, please refer to section 8.3)

Shutdown Parameters	Definition
Cancel Shutdown if events Restored in Shutdown Delay	Checkbox is selected: The shutdown (sleep) will be cancelled during shutdown delay timer counting down if the events restore to normal.

	Checkbox isn't selected: The system will be shut down (sleep) during shutdown delay timer counting down even if the events restore to normal. The checkbox isn't chosen as default.
Shutdown Delay	The system begins to shut down after shutdown delay time counting down to 0. The shutdown Delay is 0 s as default.
Run Script Before Shutdown	If the checkbox is selected, the Script will be executed before the system shutdown (sleep). By the default, the SPS will not execute the script before system shutdown.
Script Max Execution Time	The script will be ended when the max execution time is met. The script max execution time is 60s as default.

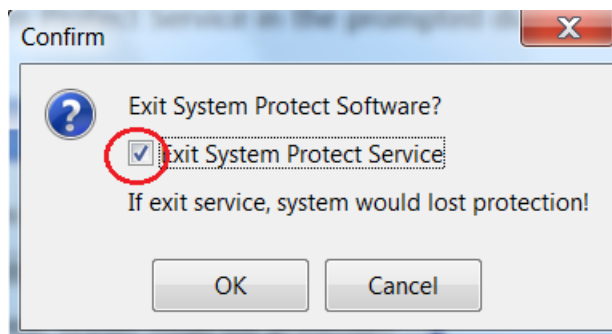
- Click "System"-> "about", check the software version



- Click "Log"-> "Event log", check the SPS events log

2.4 Uninstall the SPS

- Right click the Tray Icon, select Exit.
Select the Exit System Protect Service in the prompted dialog to exit the SPS user interface and SPS service.



- Select Start menu > All Programs > System Protect Software > Uninstall System Protect Service, uninstall the SPS

2.4 Configuring the Port

The SPS use UDP 3034 as the communication port with NMC as default. Please open the port according the command as below:

```
netsh. exe firewall add portopening udp 3034 SPSPort
```

Note: If the UDP 3034 is captured by the other program, the number of the port value will be added 1(range from 3034~3083)

3 Installation and configuration in Linux, MAC OS and Unix

3.1 Installing the SPS

- | Operation System | packages |
|---|--|
| Linux i386 with GUI (Graphics User Interface Mode) | SPS-GUI-*.*.*.linux-i386.tar.gz
SPS-CUI-*.*.*.linux-i386.tar.gz
The two packages above are supported in GUI mode |
| Linux i386 with CUI (Console User Interface Mode) | SPS-CUI-*.*.*.linux-i386.tar.gz |
| Linux AMD 64 with GUI(Graphics Mode) | SPS-GUI-*.*.*.linux-x86_64.tar.gz
SPS-CUI-*.*.*.linux-x86_64.tar.gz
The two packages above are supported in GUI mode |
| Linux AMD 64 with CUI (Console Mode) | SPS-CUI-*.*.*.linux-x86_64.tar.gz |
| MAC OS 10.7and later for Intel | SPS-intel-*.*.*.MACOS.tar.gz |
| MAC OS 10.6 for Intel | SPS-*.*.*.MACOSX-10.6-intel.tar.gz |
| MAC OS 10.5 for PPC | SPS-*.*.*.MACOSX-10.5-ppc.tar.gz |
| Solaris 10 for Intel | SPS-CUI-*.*.*.solaris-intel.tar.gz |
| Solaris 10 for Sparc | SPS-CUI-*.*.*.solaris-sparc.tar.gz |

- Extract the file, Enter the command:
tar -zxvf SPS*
Note: for the solaris OS, please extract as following:
gunzip SPS*.tar.gz
tar -xvf SPS*.tar
- Installing the file, Enter the command:
./SPS.install
- Finish the installation, Enter “y”
- By default, the SPS is installed to the path “/opt/spc”

3.2 Starting the SPS

3.2.1 Linux (MAC OS) with GUI

- SPS service will run automatically in the background when the system boot.

Start or stop the SPS service when the system boots by the following command in table.

Operation System	Starting the SPS Service when system boot	Stopping the SPS Service when system boot
RedHat	chkconfig --add SPSService	chkconfig --del SPSService
SUSE	chkconfig --add SPSService	chkconfig --del SPSService
Ubuntu	sudo update-rc.d SPSService defaults	sudo update-rc.d -f SPSService remove
MAC OS	sudo launchctl load /Library/LaunchDaemons/SPSService.plist	sudo launchctl unload /Library/LaunchDaemons/SPSService.plist

- Start the SPS service manually ,go to the installation directory, enter the command:
./SPSService
- For the Linux , Start the SPS user interface in the installation directory, enter the command:
./SPS

For the MAC OS, Start the SPS user interface in the installation directory, enter the command:

open SPS.APP

The packages in the below table are needed. In generally, the packages will be installed in the system as default:

Library Name	Provided by Package	Super Package
gtk-x11-2.0	gtk2	
gdk_pixbuf-2.0	gtk2	
gthread-2.0	libgthread-2_0-0	glib2
glib-2.0	glib2	glib2
gmodule-2.0	libgmodule	glib2
gobject-2.0	libgobject-2_0-0	glib2
atk-1.0	atk/libatk	
pango-1.0	pango	
freetype	freetype2	
fontconf	fontconfig	
Xrender	xorg-x11-libXrender	xorg-x11
x11	xorg-x11-libX11	xorg-x11
Xext	xorg-x11-libX11	xorg-x11
png12	libpng12-0	
z	zlib	

3.2.2 Linux (Unix) with CUI

Note: The GUI mode of SPS for Unix OS is not supported. Please use the CUI mode of SPS for Unix.

- Start the SPS service in the installation directory, enter the command:
./SPS -s
Restart the SPS service if necessary, Enter the command: **./SPS -r**
SPS service starts automatically at system boot as default.
- The SPS user interface is unavailable in the Linux with CUI, refer to the SPS command parameters in the below table:

Parameter	Function	Comment
-h	Print all the parameters and functions	
-v	Show the software version and copyright	
-S	Start SPS service automatically at system boot	Take effect at next boot
-X	Stop SPS service at system boot	Take effect at next boot
-s	Start SPS service	Take effect immediately
-x	Exit SPS service	Take effect immediately
-r	Restart SPS service	Take effect immediately
-l	List all the device and status	
-p	Check the shutdown parameters	
-i	Modify the configuration parameters	Enter the password, edit the configuration by the vi tool
-c	Modify the password	Enter the old password, then input the new password

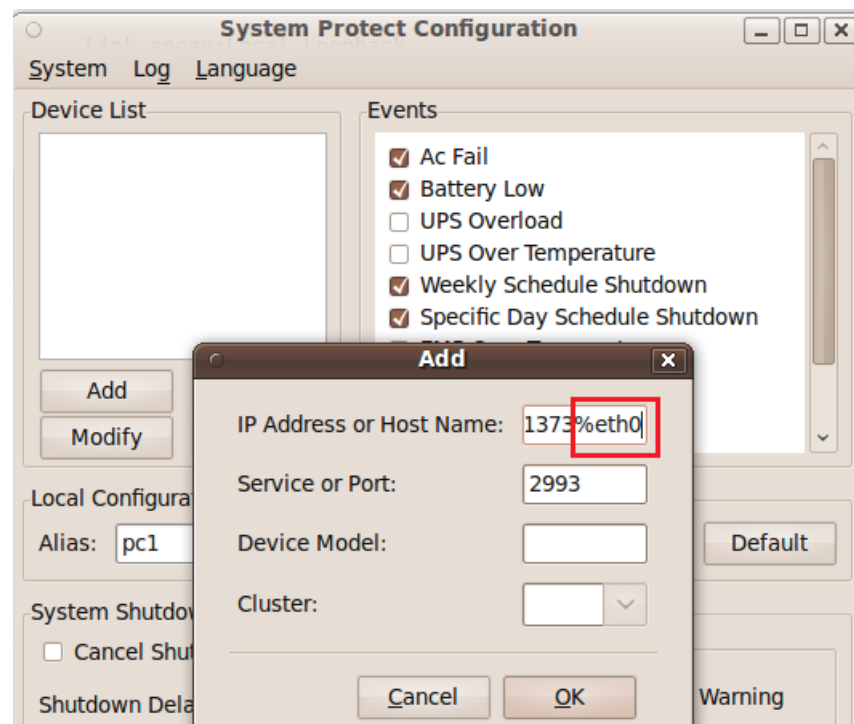
3.3 Configuring the SPS

3.3.1 Linux (MAC OS) with GUI

Refer to the SPS configuration in Windows (section 2.3)

Note: Please add the network id as suffix at the end of IPV6 address (for example: %eth0) as the below image if the IP address is IPV6.

```
root@pc1: ~  
File Edit View Terminal Help  
connect: Invalid argument  
root@pc1:~# ping FE80::220:85FF:FEF7:1373  
ping: unknown host FE80::220:85FF:FEF7:1373  
root@pc1:~# ifconfig  
eth0  Link encap:Ethernet  HWaddr 00:19:21:bb:fd:42  
       inet addr:172.18.139.68  Bcast:172.18.139.255  Mask:255.255.255.0  
       inet6 addr: fe80::219:21ff:febb:fd42/64 Scope:Link  
       UP BROADCAST RUNNING MULTICAST  MTU:1500  Metric:1  
       RX packets:249695 errors:0 dropped:0 overruns:0 frame:0  
       TX packets:127784 errors:0 dropped:0 overruns:0 carrier:0  
       collisions:0 txqueuelen:1000  
       RX bytes:17467825 (17.4 MB)  TX bytes:125197970 (125.1 MB)  
       Interrupt:21 Base address:0xa000  
  
lo    Link encap:Local Loopback  
       inet addr:127.0.0.1  Mask:255.0.0.0  
       inet6 addr: ::1/128 Scope:Host  
       UP LOOPBACK RUNNING  MTU:16436  Metric:1  
       RX packets:4 errors:0 dropped:0 overruns:0 frame:0  
       TX packets:4 errors:0 dropped:0 overruns:0 carrier:0  
       collisions:0 txqueuelen:0  
       RX bytes:240 (240.0 B)  TX bytes:240 (240.0 B)  
  
root@pc1:~#
```



3.3.2 Linux (Unix) with CUI

Note: The GUI mode of SPS for Unix OS is not supported. Please use the CUI mode of SPS for Unix.

- Enter the command: `./SPS -i`.
Input the password, the password is admin as default. Open the configuration by "vi" tool.
- Modify the parameters configuration, save and exit.

3.3.2.1 Add one device, or set the Redundant UPS Input if the computer is protected by multi-devices.

Note. The SPS version should be 1.5.0.2 or later for Load segment function.

- Add one device. Add the NMC IP address in the “name” parameter. (e.g the NMC IP address is 172.18.139.60). If the UPS support Load segment, set the “powerby” parameter as **LS1** or **LS2**. If the UPS don’t support Load segment, set the “powerby” parameter as **Master**.

Format as below:

```
<RemoteList>
```

```
  <Remote name="172.18.139.60" serv="2993" model="" powerby="LS1"/>
```

```
</RemoteList>
```

Or you can use the following format also:

```
<RemoteList>
```

```
  <Remote name="172.18.139.60" serv="2993" model="" powerby="LS1"/>
```

```
  <Cluster name="">
```

```
    <Remote name="" serv="2993" model=""/>
```

```
  </Cluster>
```

```
</RemoteList>
```



```
<?xml version="1.0" encoding="UTF-8"?>
<SPS xmlns:xsi="http://www.w3.org/2001/XMLSchema-instance"
xsi:noNamespaceSchemaLocation="ProtectSW.xsd">
  <RemoteList>
    <Remote name="172.18.139.60" serv="2993" model="" powerby="LS1"/>
    <Cluster name="">
      <Remote name="" serv="2993" model="" powerby="Master"/>
    </Cluster>
  </RemoteList>
  <AcFail>1</AcFail>
  <BatteryLow>1</BatteryLow>
  <Overload>0</Overload>
  <OverTp>0</OverTp>
  <EMPTp>0</EMPTp>
  <EMPHum>0</EMPHum>
  <EMPct1>0</EMPct1>
  <EMPct2>0</EMPct2>
  <WSS>1</WSS>
  <SSS>1</SSS>
  <Capacity>1</Capacity>
  <RemainTime>1</RemainTime>
  <LS1>1</LS1>
  <LS2>1</LS2>
```

- Add redundant devices in groups, system will be shutdown whenever any of the group met the shutdown condition.

If the UPS support Load segment, set the “powerby” parameter as **LS1** or **LS2**. If the UPS don’t support Load segment, set the “powerby” parameter as **Master**.

For example:

The IP address of NMC is 172.18.127.65 and 172.18.127.66 in group1

The IP address of NMC is 172.18.127.73 and 172.18.127.74 in group2

Format as below:

```
<RemoteList>
  <Cluster name="group1">
    <Remote name="172.18.127.65" serv="2993" model="" powerby="Master"/>
    <Remote name="172.18.127.66" serv="2993" model="" powerby="Master"/>
  </Cluster>
  <Cluster name="group2">
    <Remote name="172.18.127.73" serv="2993" model="" powerby="Master"/>
    <Remote name="172.18.127.74" serv="2993" model="" powerby="Master"/>
  </Cluster>
</RemoteList>
```

Note: Please add the network id as suffix at the end of IPV6 address (for example: %eth0) if the communication mode is IPV6. Refer to the section “3.3.1 Linux (MAC OS) with GUI”.

3.3.2.2 Set the alarm attribute

Enable the alarm, set the value to 1. The SPS will pop up alarm in the console and protect the system to shut down gracefully.

Disable the alarm, set the value to 0. The SPS will not pop up alarm and will not shut down the system.

The default setting as below:

```
<AcFail>1</AcFail>
<BatteryLow>1</BatteryLow>
<Overload>0</Overload>
<OverTp>0</OverTp>
<EMPTp>0</EMPTp>
<EMPHum>0</EMPHum>
<EMPct1>0</EMPct1>
<EMPct2>0</EMPct2>
<WSS>1</WSS>
<SSS>1</SSS>
<Capacity>1</Capacity>
<RemainTime>1</RemainTime>
```

Event parameters	Alarm
<AcFail>	Ac Fail
<BatteryLow>	Battery Low
<Overload>	UPS Overload
<OverTp>	UPS Over Temperature
<WSS>	Weekly Schedule Shutdown
<SSS>	Specific Day Schedule Shutdown
<EMPTp>	EMP Over Temperature
<EMPHum>	EMP Over Humidity
<EMPct1>	EMP Contact1 Alarm
<EMPct2>	EMP Contact2 Alarm

<Capacity>	Battery Capacity Below Limit (The SPS version should be 1.3.0.3 or later)
<RemainTime>	Battery Backup Time Below Limit (The SPS version should be 1.3.0.3 or later)

3.3.2.3 Set the shutdown parameters

<CancelIf>0</CancelIf>

<ShutDelay>0</ShutDelay>

<EnableScript>0</EnableScript>

<Script></Script>

<MaxScriptTime>60</MaxScriptTime>

For more information, please refer to section 8.3

Shutdown Parameters	Definition
Cancel Shutdown if events Restored in Shutdown Delay <CancelIf>0</CancelIf>	If the value is 0, the system will be shut down (sleep) in shutdown delay even if the events restore. If the value is 1, the shutdown (sleep) will be cancelled in system delay if the events restore.
Shutdown Delay <ShutDelay>0</ShutDelay>	The system begins to shut down after shutdown delay time counting down to 0 The shutdown Delay is 0 s as default.
Enable or disable the Script <EnableScript>0</EnableScript>	If the value is 1, enable to run the script If the value is 0, disable to run the script
Run Script Before Shutdown <Script></Script>	Enter the path of the script; the script will be executed before the system shutdown (sleep). By the default, the SPS will not run the script before system shutdown. For example: <Script>/opt/sps/shutdown.sh</Script>
Script Max Execution Time <MaxScriptTime>60</MaxScriptTime>	The script will be ended when the max execution time is met. The script max execution time is 60s as default

3.3.2.4 Set the actions

<Action>1</Action>

Note: The system should have hibernation function if the action is set to 2.

Action	Definition
Event Warning (The action value is set to 0)	When the events occur, The SPS will pop up the alarm dialog, but the system will not be shut down or sleep.
Shutdown (The action value is set to 1)	When the shutdown condition is met, the system will be shut down
Sleep	When the shutdown condition is met, the system will be

(The action value is set to 2)	sleep
--------------------------------	-------

- Restart the SPS service after configuration end, Enter the command:

./SPS -r

- View the device status by the command:

./SPS -l

For example: The device status for 172.18.127.65 as below image.

```
[root@PC001 sps]# ./SPS -l
172.18.127.65[group1]
Device Mode: C1K
IP Address: 172.18.127.65
Host Name: Unknown
Connection Status: Connected
Shutdown Status: Normal
UPS Shutdown Delay: 2s
```

- View the shutdown configuration by the command:

./SPS -p

For example, the shutdown configuration as below image:

```
[root@PC001 sps]# ./SPS -p
Event Accepted:
Ac Fail: enable
Battery Low: enable
UPS Overload: enable
UPS Over Temperature: enable
Weekly Schedule Shutdown: enable
Specific Day Schedule Shutdown: enable
EMP Over Temperature: enable
EMP Over Humidity: enable
EMP Contact1 Alarm: enable
EMP Contact2 Alarm: enable

Ignore restore event in shutdown delay: enable
Shutdown delay: 0s

Run script before shutdown: disable
```

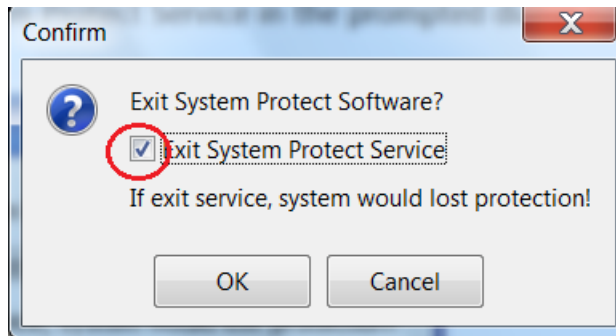
- Modify the password, enter the command: **./SPS -c**

3.3.2.5 Check the log

Go to the SPS installation path “/opt/sp”. Check the document “ProtectSW.txt”

3.4 Uninstall the SPS

- Exit the SPS user interface, Select the Exit System Protect Service in the prompted dialog to exit the SPS service.



For the Linux with CUI, exit the SPS service, run the command: **./SPS -x**

- Uninstall the SPS, enter the command in the directory where the installation package extracted:
./SPS.remove

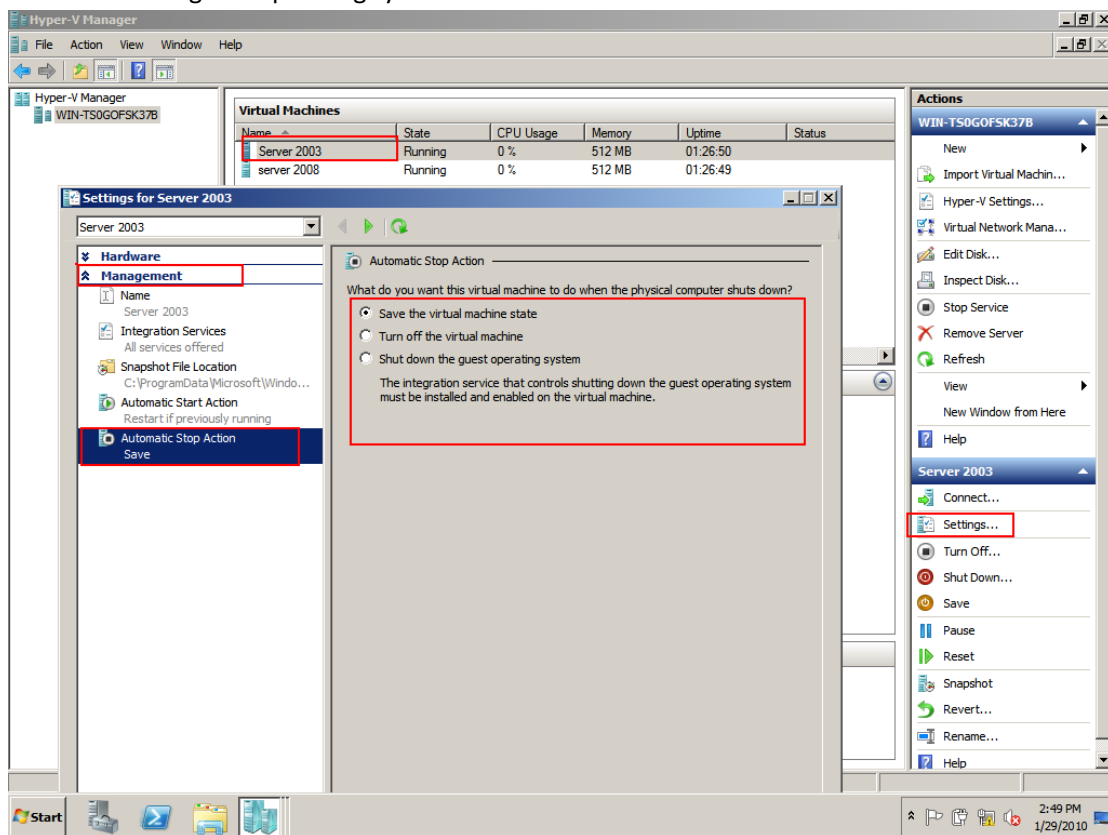
3.5 Configuring the Port

- The SPS use UDP 3034 as the communication port with NMC by default.
Note: If the UDP 3034 is captured by the other program, the number of the port will be added 1(range from 3034~3083)
- Open the UDP port by the following command:
iptables -I INPUT -p udp --dport 3034 -j ACCEPT
iptables -I OUTPUT -p udp --dport 3034 -j ACCEPT
/etc/rc.d/init.d/iptables save

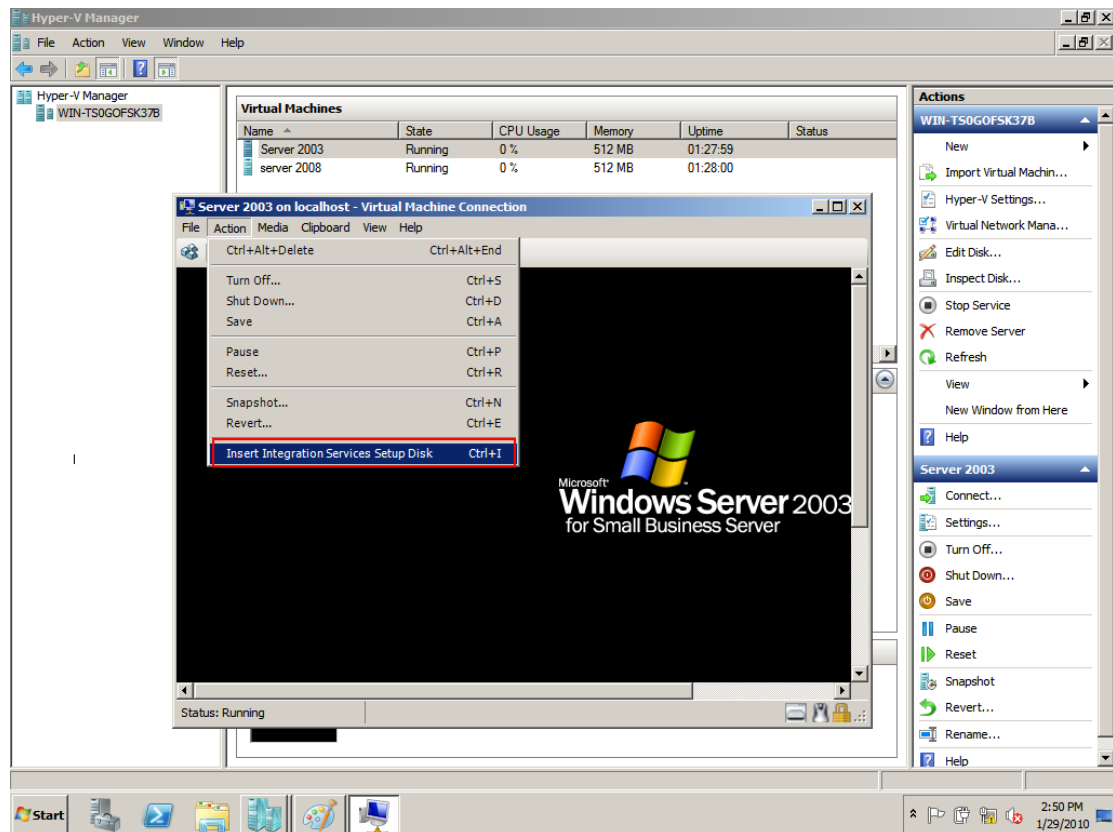
4 Installation and configuration for SPS in the Hyper-V Server

4.1 Hyper-V configuration

- Start Hyper-V Manager in the client
For example: there are two virtual machines, Windows server 2003 and 2008.
Select the VM. Click Setting -> "Automatic Stop Action Save", there are three methods.
Save the virtual machine state:
Turn off the virtual machine:
Shut down the guest operating system:

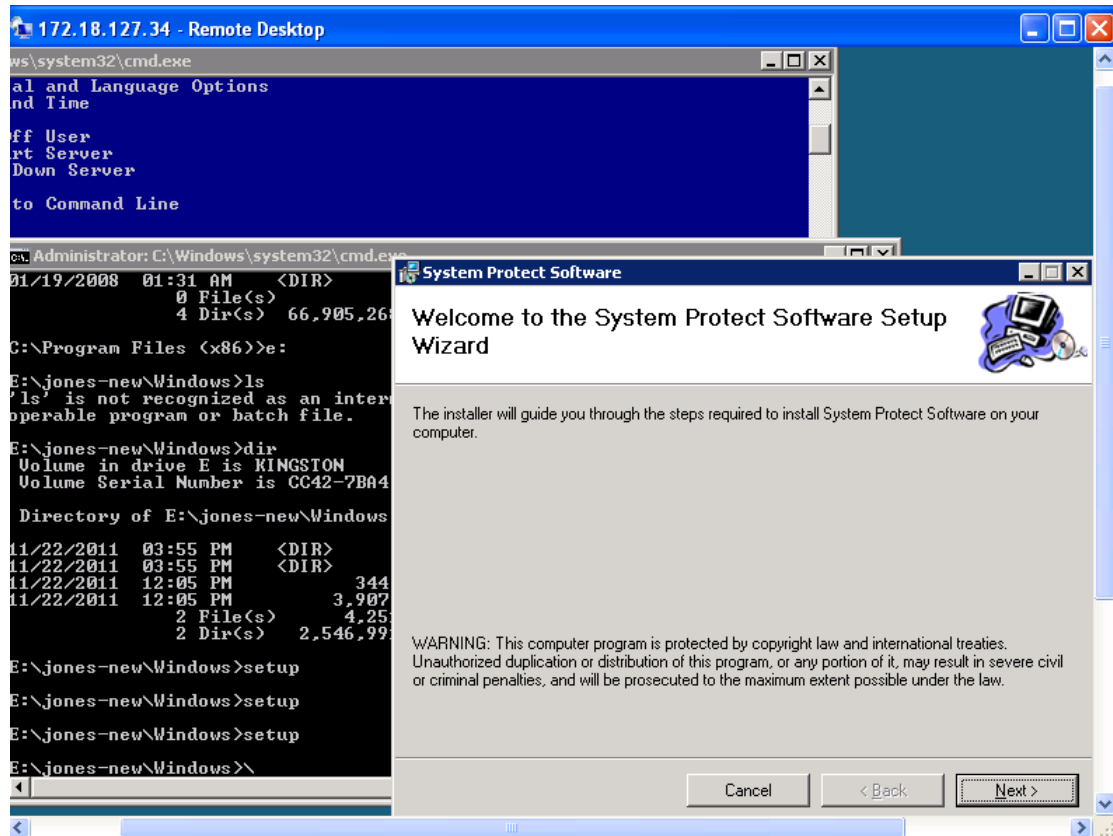


- If the third method is selected, install the "Integration Service" in the Action menu

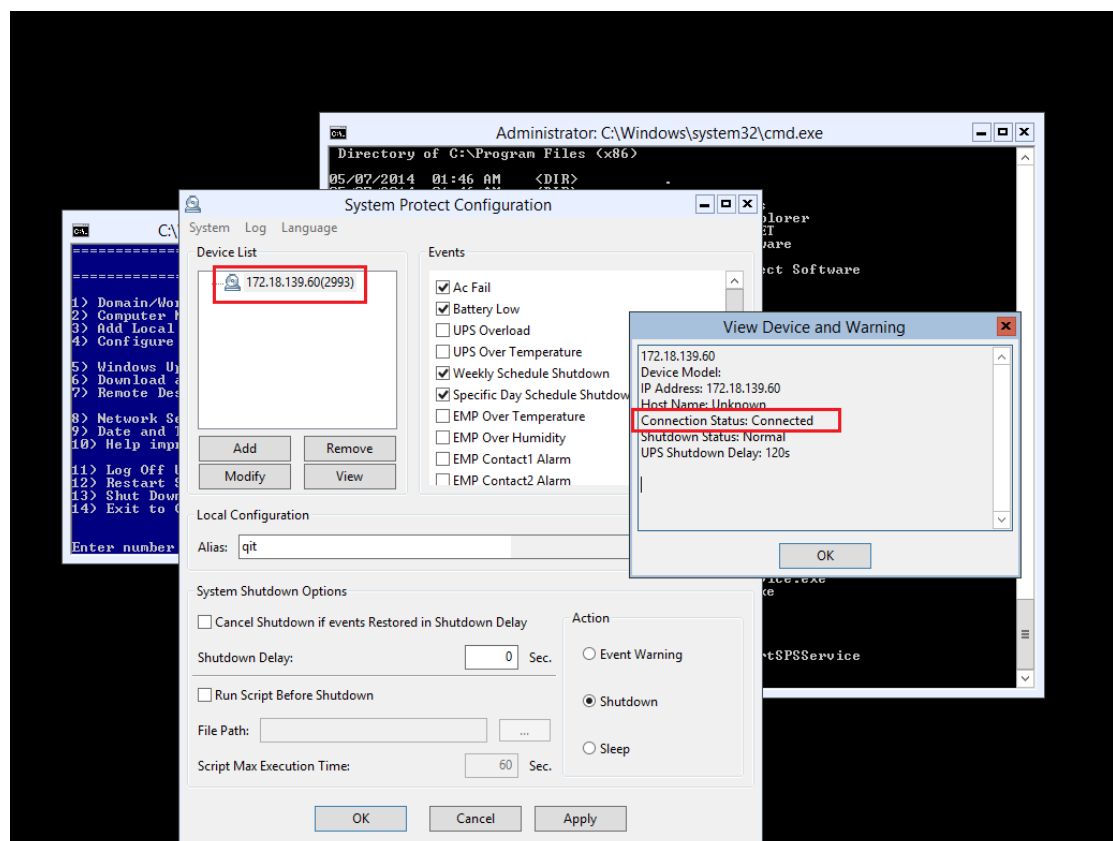


4.2 Installing and configuring the SPS

- Copy the installation file "setup.exe" to Hyper-V server 2008, enter the path where the installation file exists
- Install the SPS, enter the command: setup.exe.
By the default, the SPS file is installed to the directory C:\Program Files\System Protect Software for the 32 bit windows. And it is installed to the directory C:\Program Files(x86)\System Protect Software for the 64 bit windows.



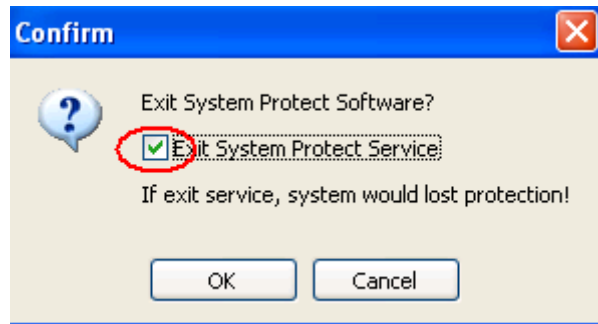
- Enter to the installation path: `cd C:\Program Files(x86)\System Protect Software`
Start SPS service and user Interface by the command: `StartSPSService.exe`
Add the NMC IP address in the SPS interface



- Refer to the chapter 2.3 to finish the SPS configuration.
The SPS Service will be started automatically when the system boots
If the parameters need to be set, open the SPS interface by the command: SPS.exe

4.3 Uninstall the SPS

- Close the SPS user interface.



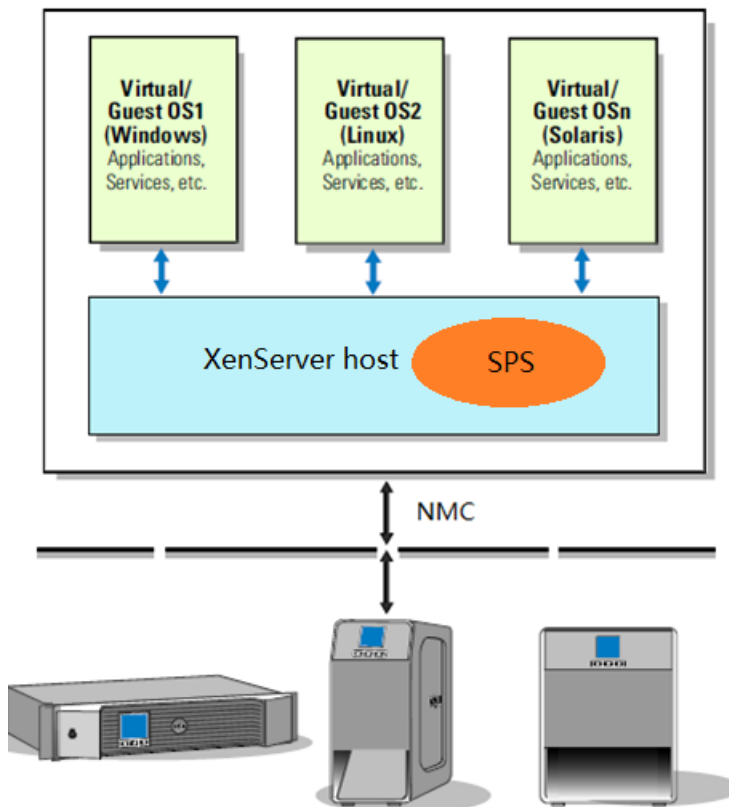
- Enter to the directory where the installation package existed. Enter the command: setup.exe:



5 Installation and configuration for SPS in the Citrix XenServer

SPS is installed on the XenServer host. When the shutdown condition is met, the SPS will notify the XenServer host to shutdown.

The VMs will be shut down automatically before the host shut down. (This action takes effect as default by the XenServer)

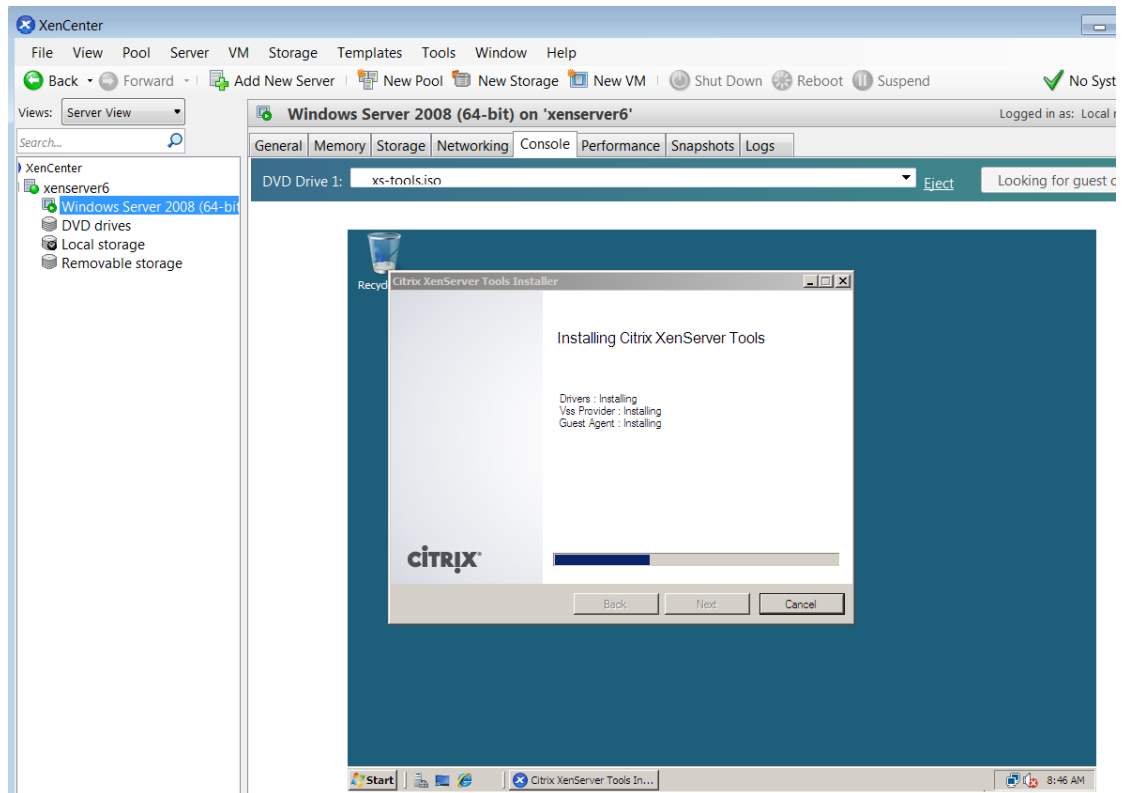


5.1 Citrix XenServer Configuration

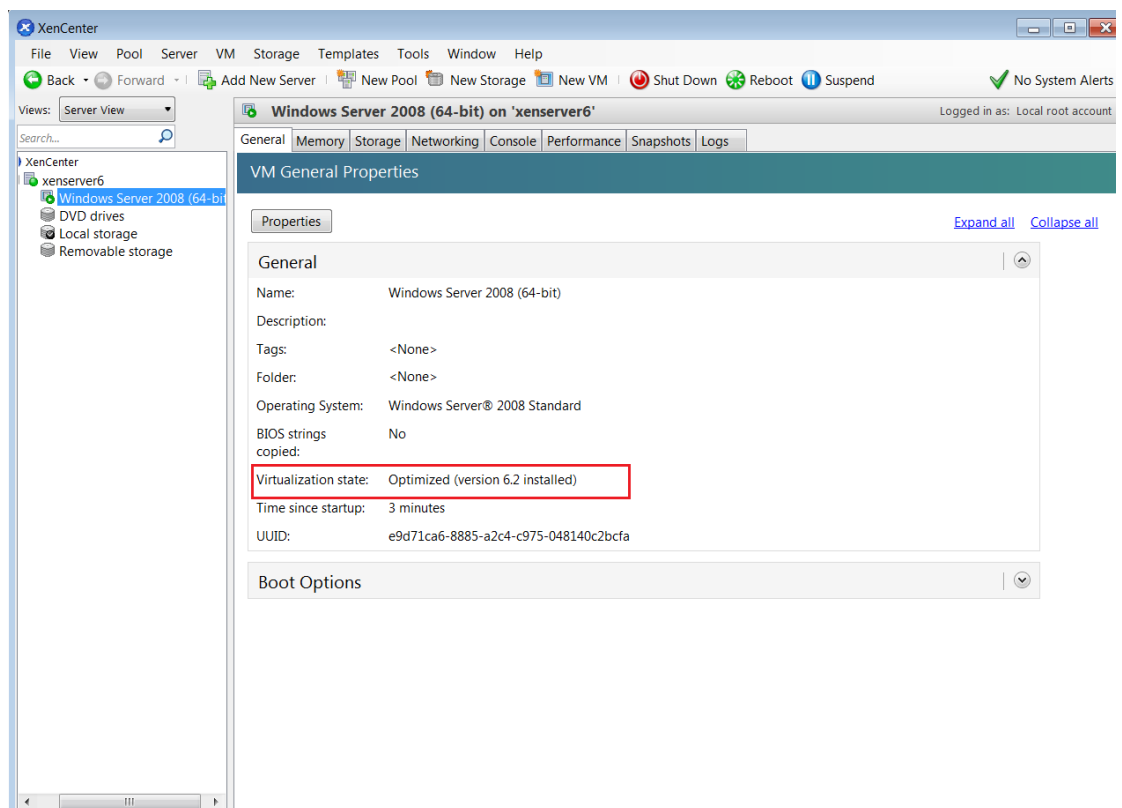
5.1.1 Installing XenServer tools for each Virtual Machine

- Open the XenServer Client, Choose the VMs, Right click VMs, Click “Install XenServer Tools”

System Protect Software User Manual



- The XenServer Tools is installed as below image:



5.1.2 Open XenServer host ports

- The SPS use UDP 3034 as the communication port with NMC as default.
Note: If the UDP 3034 is captured by the other program, the value of the port will be added 1(range from 3034~3083)
- Open the XenServer Client, click the host console, Open the UDP port by the following command:

```
iptables -I INPUT -p udp --dport 3034 -j ACCEPT
iptables -I OUTPUT -p udp --dport 3034 -j ACCEPT
/etc/rc.d/init.d/iptables save
```

5.2 Installing and Configuring for SPS

5.2.1 Installing SPS

- Upload the installation file "SPS-CUI-*.*.*.linux-i386.tar.gz" to the XenServer host using WinSCP tools
- Unzip the installation file and install the SPS by the command

```
tar -zxvf SPS-CUI-*.*.*.linux-i386.tar.gz
```
- Install the SPS by the command:

```
./SPS.install
```

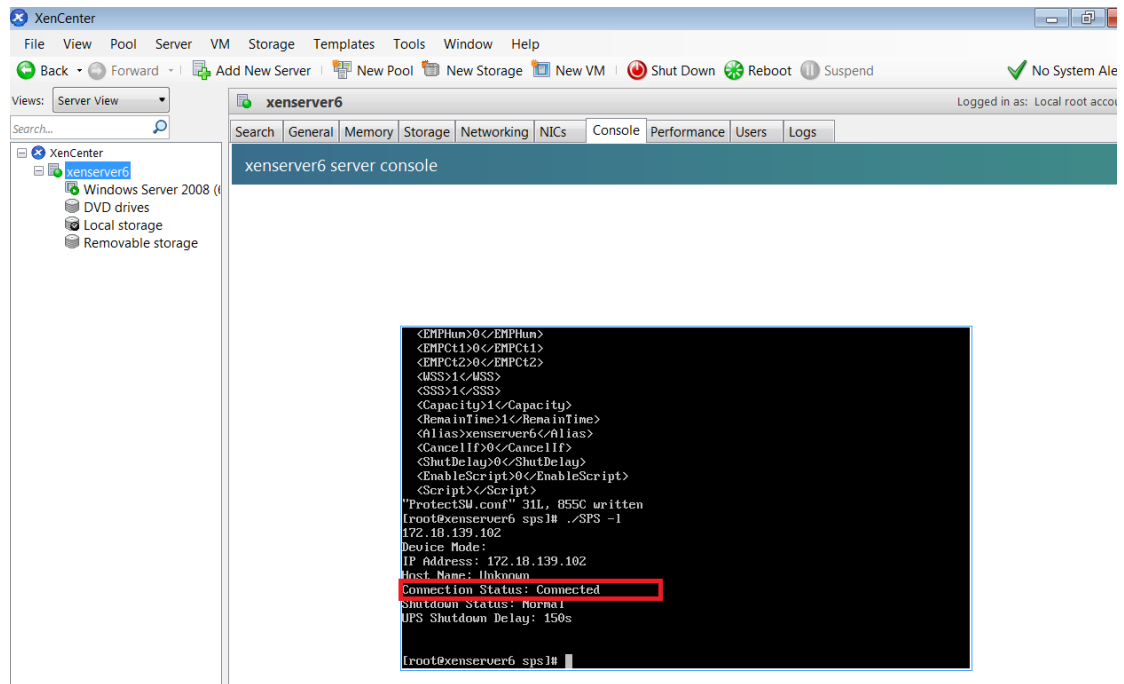
5.2.2 Configuring SPS

- Enter the /opt/sps directory, start the SPS service by the command: **./SPSService**
- Open the configuration document by the command: **./SPS -i**
Input the password: **admin**
Add the NMC IP address, for example the NMC IP is "172.18.139.102"
<RemoteList>

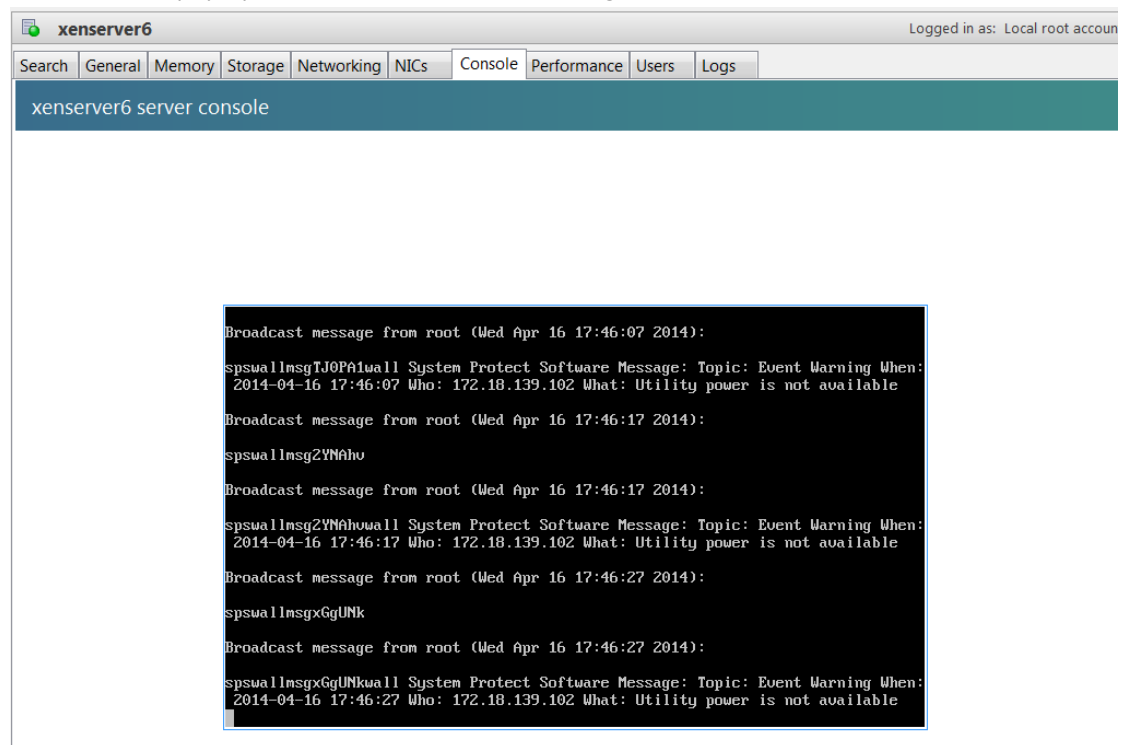
```
<Remote name="172.18.139.102" serv="2993" model=""/>
```

</RemoteList>
- Please refer to chapter 3 (Linux with CUI) for more information about shutdown parameter setting
- Restart the SPS Service by the command: **./SPS -r**
- Check the NMC is connected or not by the command:
./SPS -l
The NMC will be connected as below:

System Protect Software User Manual

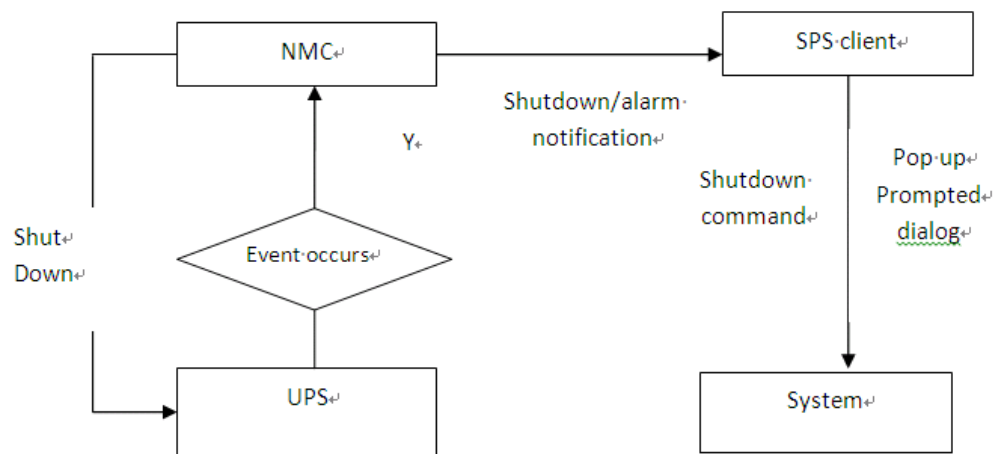


- The alarm will pop up when the AC fail as below image



6 Shutdown Operation

6.1 Shutdown flow chart



6.2 Shutdown setting (NMC Webpage Side)

6.2.1 Shutdown actions setting

- Open the NMC website, select UPS Management ->UPS shutdown, and check the Actions setting.

UPS Management » UPS Shutdown	
Event	Actions
AC Failed	Disable
Battery Low	Disable
UPS Overload	Warning
UPS Over Temperature	Client Shutdown
	Client&UPS Shutdown

There are four definers for Actions:

Action	Definition
Disable	The NMC will not send the alarm and shutdown notification to the SPS client, when the events occur.
Warning	The NMC will send the alarm notification to the SPS client, when the events occur.

Client Shutdown	The NMC will send the alarm and shutdown notification to the SPS client, when the events occur.
Client &UPS Shutdown	The NMC will send the alarm and shutdown notification to the SPS client when the events occur. Besides, the NMC will send the shutdown command to the UPS.

Note: Please select the action to “Client Shutdown” or “Client &UPS Shutdown”, so that the SPS client can be shut down gracefully by the NMC.

6.2.2 Warning Period and Warning Interval Setting

- Open the NMC website, select UPS Management ->UPS shutdown. Check the “Warning Period” setting and “Warning Interval”.

UPS Management » UPS Shutdown help			
Event	Actions	Warning Period (Sec)	Warning Interval (Sec)
AC Failed	Client&UPS Shutdown ▼	30	10

For example:

The Warning Period is set to 30S and the Warning Interval is set to 10S.

The NMC will send the “AC fail” notification to the SPS client every 10 seconds and will last about 30 seconds. The NMC will notify the SPS client to shut down after AC failing for 30S.

6.2.3 UPS Shutdown Delay Setting

- Open the NMC website, select UPS Management ->UPS shutdown. Check the UPS Shutdown Delay setting.

UPS Management » UPS Shutdown help

Event	Actions	Warning Period (Sec)	Warning Interval (Sec)
AC Failed	Client&UPS Shutdown ▼	900	30
Battery Low	Client&UPS Shutdown ▼	0	30
UPS Overload	Client&UPS Shutdown ▼	900	30
UPS Over Temperature	Client&UPS Shutdown ▼	900	30
Weekly Schedule	Client Shutdown ▼	900	30
Specific Day	Client&UPS Shutdown ▼	900	30
EMP Temperature Threshold	Client Shutdown ▼	900	30
EMP Humidity Threshold	Client Shutdown ▼	900	30
EMP Alarm-1	Client Shutdown ▼	900	30
EMP Alarm-2	Client Shutdown ▼	900	30
Below Battery Capacity Setting	Client&UPS Shutdown ▼	900	30

Cancel UPS Shutdown if events Restored in Shutdown Delay

☐

UPS Shutdown Delay(Sec)

120

Save

The UPS will be shut down after the “Warning Period” plus “UPS Shutdown Delay”, if the action is “Client &UPS Shutdown”.

By the default, the UPS shutdown delay timer is 120 seconds.

System Protect Software User Manual

For example:

AC failed Event, the “Warning Period” is 900S and the “UPS Shutdown Delay” is 120S

The UPS will be shut down after AC failing for 1020S (900S+120S).

- Make sure the time for NMC “UPS Shutdown Delay” should be longer than the timer for SPS client “Shutdown delay” plus SPS “Script MAX Execution time”, or else the warning dialog will pop up that the time is unreasonable in SPS client.

For example:

The SPS Shutdown delay timer is 90 seconds and the Script Max Execution Time is 60 seconds.

The total time value is 150seconds (90S+60S) in SPS client.

But the UPS shutdown Delay time is 120 seconds in NMC webpage side. The UPS shutdown Delay time 120s is shorter than the 150 seconds, so the alarm dialog will pop up that the time is unreasonable.

Local Configuration

Alias: LIACNWH7501365.napa.ad.etn.com Default

System Shutdown Options

☐ Cancel Shutdown if events Restored in Shutdown

Shutdown Delay: 90 Sec

☒ Run Script Before Shutdown

File Path: E:\test.bat

Script Max Execution Time: 60 Sec

Action

☐ Event Warning

☒ Shutdown

☐ Sleep

OK Cancel Apply

System Protect Software

Topic: Unreasonable Time

When: 2014-09-29 14:50:47

Who: 172.18.139.73

What: The UPS shutdown delay (120)s isn't greater than the setting time (150)s

☐ Don't show this message again

OK(7s)

6.2.4 Cancel UPS Shutdown if events restored in Shutdown Delay

Open the NMC website, select UPS Management ->UPS shutdown, enable/disable the checkbox for “Cancel UPS shutdown if events restored in Shutdown Delay”.

UPS Management » UPS Shutdown help			
Event	Actions	Warning Period (Sec)	Warning Interval (Sec)
AC Failed	Client&UPS Shutdown ▼	900	30
Battery Low	Client&UPS Shutdown ▼	0	30
UPS Overload	Client&UPS Shutdown ▼	900	30
UPS Over Temperature	Client&UPS Shutdown ▼	900	30
Weekly Schedule	Client Shutdown ▼	900	30
Specific Day	Client&UPS Shutdown ▼	900	30
EMP Temperature Threshold	Client Shutdown ▼	900	30
EMP Humidity Threshold	Client Shutdown ▼	900	30
EMP Alarm-1	Client Shutdown ▼	900	30
EMP Alarm-2	Client Shutdown ▼	900	30
Below Battery Capacity Setting	Client&UPS Shutdown ▼	900	30
Cancel UPS Shutdown if events Restored in Shutdown Delay		<input type="checkbox"/>	
UPS Shutdown Delay(Sec)		120	
Save			

- Select the checkbox:
If the events restore after the events occur for “Warning Period” time, the NMC will cancel the UPS shutdown command and cancel the SPS client shutdown notification
- Unselect the checkbox:
Even If the events restore after the events occur for “Warning Period” time, the NMC still send the shutdown notification to the UPS and SPS client if the event restored during the “UPS Shutdown Delay” timer.
- For example:
AC failed Event, the “Warning Period” is 900S and the “UPS Shutdown Delay” is 120S, select “Cancel UPS shutdown if events restored in Shutdown Delay” checkbox.
After AC failing for 900S, then the AC restore, the NMC will cancel the UPS shutdown command and cancel the SPS client shutdown notification

6.3 Shutdown order

6.3.1 Shutdown continue if events restored

For example:

- NMC webpage side:
Set the action to “Client &UPS Shutdown”, set the “warning period” to 30s, set the “UPS Shutdown Delay” to 120s. Unselect the “Cancel UPS shutdown if event restored” checkbox.

UPS Management » UPS Shutdown			
Event	Actions	Warning Period (Sec)	Warning Interval (Sec)
AC Failed	Client&UPS Shutdown	30	10
Battery Low	Client&UPS Shutdown	30	10
UPS Overload	Client&UPS Shutdown	30	10
UPS Over Temperature	Client&UPS Shutdown	30	10
Weekly Schedule	Client&UPS Shutdown	30	10
Specific Day	Client&UPS Shutdown	30	10
EMP Temperature Threshold	Client&UPS Shutdown	30	10
EMP Humidity Threshold	Client&UPS Shutdown	30	10
EMP Alarm-1	Client&UPS Shutdown	30	10
EMP Alarm-2	Client&UPS Shutdown	30	10

☐ Cancel UPS Shutdown if events Restored in Shutdown Delay

UPS Shutdown Delay(Sec)

Save

- SPS client side:
Set the Shutdown Delay to 60s, set "Script Max Execution Time" to 40s, unselect "Cancel Shutdown if events restored in Shutdown Delay" checkbox.

Local Configuration

Alias: Default

System Shutdown Options

☐ Cancel Shutdown if events Restored in Shutdown

Shutdown Delay: Sec.

☒ Run Script Before Shutdown

File Path: ...

Script Max Execution Time: Sec.

☐ Event Warning
☒ Shutdown
☐ Sleep

OK Cancel Apply

- Shutdown order:
 - When AC fails, the NMC send the warning to SPS client. SPS will pop up warning dialog, this process will last 30S.
 - After AC failing for 30S, the SPS client and UPS begin to shutdown count down. After SPS client counting down for 60S, SPS begins to execute the shutdown script
Note: Even if the AC restore during the shutdown counting down, the SPS client still continue to shut down.
 - After executing the shutdown script for 40S, SPS client begins to shut down.
 - After UPS counting down for 120S, the UPS begins to shut down
Note: Even if the AC restore during the UPS counting down, the UPS still continue to shut down

- The system and UPS will cancel shutdown if the AC restore before AC failing for 30S.

6.3.2 Shutdown discontinue if events restored

For example:

- NMC webpage side:
Set the action to Client & UPS Shutdown, set the warning period to 30s, set the UPS shutdown Delay to 120s. Select the Cancel UPS shutdown if event restored checkbox.

UPS Management » UPS Shutdown help			
Event	Actions	Warning Period (Sec)	Warning Interval (Sec)
AC Failed	Client&UPS Shutdown ▼	30	10
Battery Low	Client&UPS Shutdown ▼	30	10
UPS Overload	Client&UPS Shutdown ▼	30	10
UPS Over Temperature	Client&UPS Shutdown ▼	30	10
Weekly Schedule	Client&UPS Shutdown ▼	30	10
Specific Day	Client&UPS Shutdown ▼	30	10
EMP Temperature Threshold	Client&UPS Shutdown ▼	30	10
EMP Humidity Threshold	Client&UPS Shutdown ▼	30	10
EMP Alarm-1	Client&UPS Shutdown ▼	30	10
EMP Alarm-2	Client&UPS Shutdown ▼	30	10

Cancel UPS Shutdown if events Restored in Shutdown Delay	<input checked="" type="checkbox"/>
UPS Shutdown Delay(Sec)	120

Save

- SPS client side:
Set the Shutdown Delay to 60s, set Script Max Execution Time to 40s.
Select Cancel Shutdown if events restored in Shutdown Delay.

Local Configuration

Alias: Default

System Shutdown Options

☒ Cancel Shutdown if events Restored in Shutdow

Shutdown Delay: Sec.

☒ Run Script Before Shutdown

File Path: ...

Script Max Execution Time: Sec.

Action

☐ Event Warning
 ☒ Shutdown
 ☐ Sleep

OK
Cancel
Apply

- Shutdown order:
 - When AC fails, the NMC send the warning to SPS client. SPS client will pop up warning dialog, this process will last 30S.
 - After AC failing for 30S, the UPS and SPS client begin to shutdown count down. After SPS

client counting down for 60S, SPS begins to execute the shutdown script

Note: If the AC restore during the SPS client shutdown counting down, the system cancel to shut down.

3. After executing the shutdown script for 40S, SPS client begins to shut down.

4. After UPS counting down for 120S, the UPS begins to shut down

Note: If the AC restore during the UPS counting down, the UPS will cancel to shut down

5. The SPS client and UPS will cancel shutdown if the AC restore before AC failing for 30S.

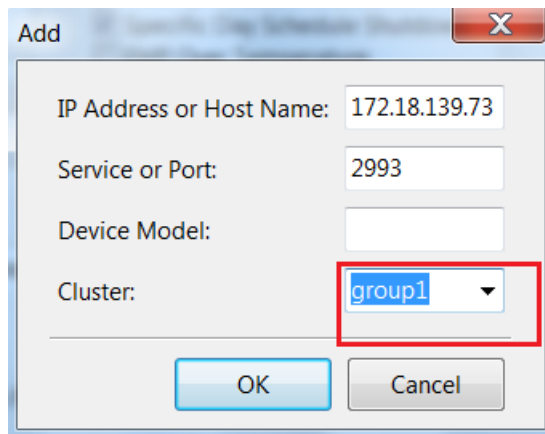
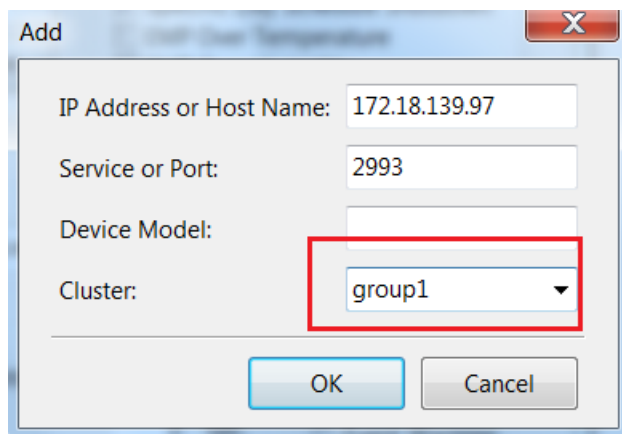
6.4 Redundant UPS Input shutdown

- For a computer powered by more than one NMC UPS, we can add them into a cluster. The system will start to shut down when the shutdown conditions are all met for the devices under the group1.

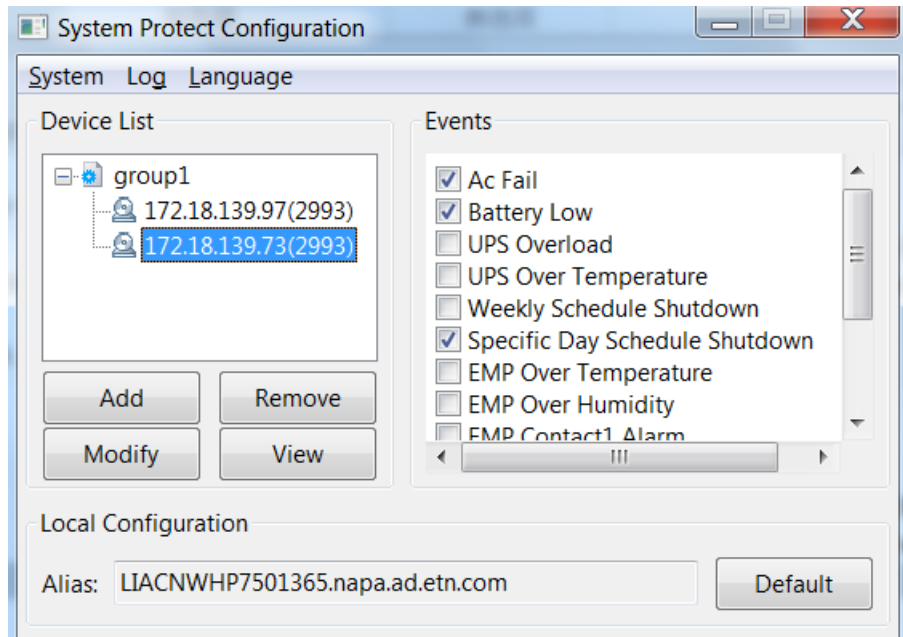
Enter the IP address of NMC via click "Add" button on the screen of SPS.

Enter a Cluster name, for example, group1.

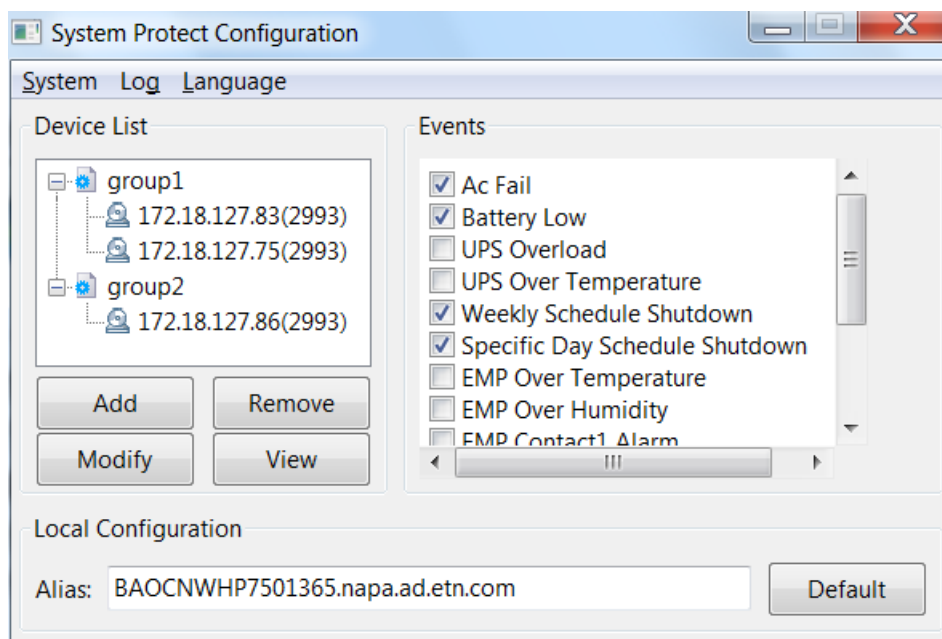
Add the two NMC IP address, and enter the same Cluster name.



The NMC UPSs that under the same Cluster will become the same group



- Multi-groups are supported.
The system will be shutdown whenever any of the group is met the shutdown condition

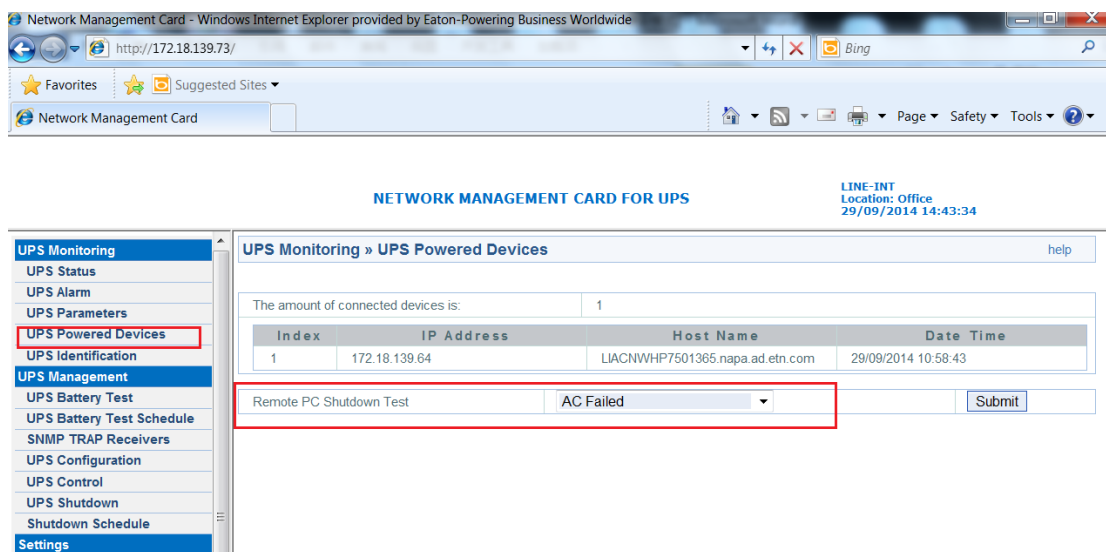


6.5 Simulate shutdown by event

Before doing this simulate test, please make sure the system is not running with critical mission, and is allowed to shut down for a while.

Open the NMC website, select UPS Management -> UPS Powered Devices.

System Protect Software User Manual

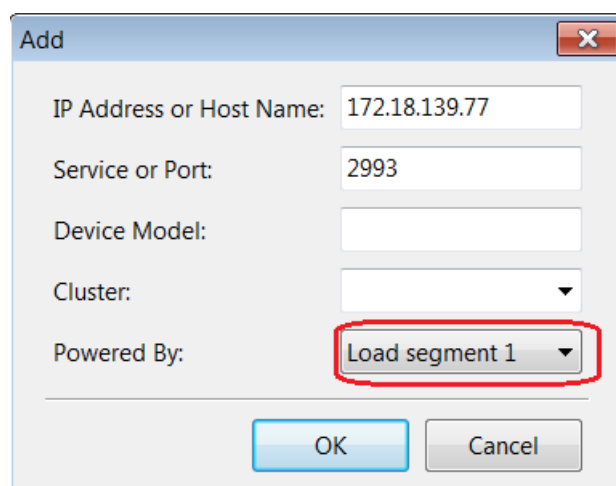


- The server for the SPS client will be added to the “UPS Powered Devices” table if the communication is established between the SPS and NMC.
- Select the event in the “Remote PC Shutdown Test” drop list, click submit button, the NMC will send the warning and shutdown notification to the SPS client.
- The SPS will show the alarms dialog and shutdown/sleep the computer.
- After the test, wait for “UPS Shutdown Delay” time (120S as default, refer to section 8.2.3), then turn on the computer system.

6.6 Load segment shutdown

Note: SPS version should be 1.5.0.2 or later

Set the “power by” parameter to Load segment 1 or Load segment 2 on the SPS client



System Log Language

Device List

..... 172.18.139.77(2993) **LS1**

Add Remove

Modify View

Events

☒ Ac Fail

☒ Battery Low

☐ UPS Overload

☐ UPS Over Temperature

☒ Weekly Schedule Shutdown

☒ Specific Day Schedule Shutdown

☐ EMP Over Temperature

☐ EMP Over Humidity

☐ EMP Contact1 Alarm

☐ EMP Contact2 Alarm

Local Configuration

Alias:

Set the Load segment shutdown timer on the NMC website

For example, the LS1 “shut down timer” is 180s and the LS2 “shut down timer” is 240s

When the AC fail event occurs, the LS1 will be shut down after AC failing for 180s

When the AC fail event occurs, the LS2 will be shut down after AC failing for 240s

UPS Monitoring

UPS Status

UPS Alarm

UPS Parameters

UPS Powered Devices

UPS Identification

UPS Management

UPS Battery Test

UPS Battery Test Schedule

SNMP TRAP Receivers

UPS Configuration

UPS Control

UPS Shutdown

Shutdown Schedule

Settings

NMC System

Reboot System

Access Control

Date and Time

SNMPv1/2 Configuration

Wake On LAN

Email Notification

Firmware Upload

File Management

Logs

UPS Log

UPS Management » UPS Configuration help

UPS

Over Load Set Point(%)

Over Temperature Set Point(°C)

EMP

Sensor	Description	Low Point	High Point
Temperature(°C)	uu	<input checked="" type="checkbox"/> 10	<input type="checkbox"/> 44
Humidity(%)	nwr	<input type="checkbox"/> 46	<input type="checkbox"/> 99
Alarm-1	hty	Normally Closed	
Alarm-2	asewe	Normally Closed	

UPS Battery

Last Replace Date(dd/mm/yyyy)

Shutdown when battery capacity is below(%)

Load Segment

	Shutdown timer	Startup timer
Load Segment 1(Sec)	<input type="text" value="180"/>	<input type="text" value="5"/>
Load Segment 2(Sec)	<input type="text" value="240"/>	<input type="text" value="5"/>

6.6.1 Load segment timer is shorter than AC fail warning period

- Set the UPS shutdown timer and AC failed warning period on the NMC website
For example: The “UPS shutdown delay” timer is 60s and the AC failed “warning period” timer is 900s, so the load segment timer is shorter than AC fail warning period. (180<900, 240<900)

UPS Management » UPS Shutdown				
Event	Actions	Warning Period (Sec)	Warning Interval (Sec)	
AC Failed	Client&UPS Shutdown	900	10	
Battery Low	Disable	0	30	
UPS Overload	Disable	900	30	
UPS Over Temperature	Client&UPS Shutdown	60	10	
Weekly Schedule	Disable	900	30	
Specific Day	Disable	900	54	
EMP Temperature Threshold	Disable	152	30	
EMP Humidity Threshold	Disable	900	30	
EMP Alarm-1	Disable	43	34456	
EMP Alarm-2	Disable	343	30	
Below Battery Capacity Setting	Disable	0	30	

Cancel UPS Shutdown if events Restored in Shutdown Delay ☒

UPS Shutdown Delay(Sec) 60

Save

- Shutdown order:
The SPS client will be shut down after AC failing for “Load segment shutdown timer” minus “UPS shutdown Delay” timer
 - If the system powered by LS1, the NMC will notify the SPS client to shut down after AC failing for 120s ($180-60=120$)
 - If the system powered by LS2, the NMC will notify the SPS client to shut down after AC failing for 180s ($240-60=180$)

6.6.2 Load segment timer is longer than AC fail warning period

- Set the UPS shutdown timer and AC failed warning period on the NMC website
For example: The “UPS shutdown delay” timer is 60s and the AC failed “warning period” is 90s, so the load segment timer is longer than AC fail warning period ($180>90$, $240>90$)

UPS Management » UPS Shutdown				
Event	Actions	Warning Period (Sec)	Warning Interval (Sec)	
AC Failed	Client&UPS Shutdown	90	10	
Battery Low	Disable	0	30	
UPS Overload	Disable	900	30	
UPS Over Temperature	Client&UPS Shutdown	60	10	
Weekly Schedule	Disable	900	30	
Specific Day	Disable	900	54	
EMP Temperature Threshold	Disable	152	30	
EMP Humidity Threshold	Disable	900	30	
EMP Alarm-1	Disable	43	34456	
EMP Alarm-2	Disable	343	30	
Below Battery Capacity Setting	Disable	0	30	

Cancel UPS Shutdown if events Restored in Shutdown Delay ☒

UPS Shutdown Delay(Sec) 60

Save

- Shutdown order:
The SPS client will be shut down after AC fail “Warning Period” timer is met
 - If the system powered by LS1 (LS1 shutdown timer is longer than AC failed “warning period”, $180>90$), the NMC will notify the SPS client to shut down after AC failing for 90s
 - If the system powered by LS2 (LS2 shutdown timer is longer than AC failed “warning period”, $240>90$), the NMC will notify the SPS client to shut down after AC failing for 90s